

# Claude Monet

## Picture Study

Emily Cook & Kathy Weitz

*The images contained in this PDF are copyrighted, as per the person or museum who owns it, therefore we cannot offer them as a printed book. If you want the pictures in print, the copyright allows for you to print and bind them into a little volume for personal and educational purposes only.*

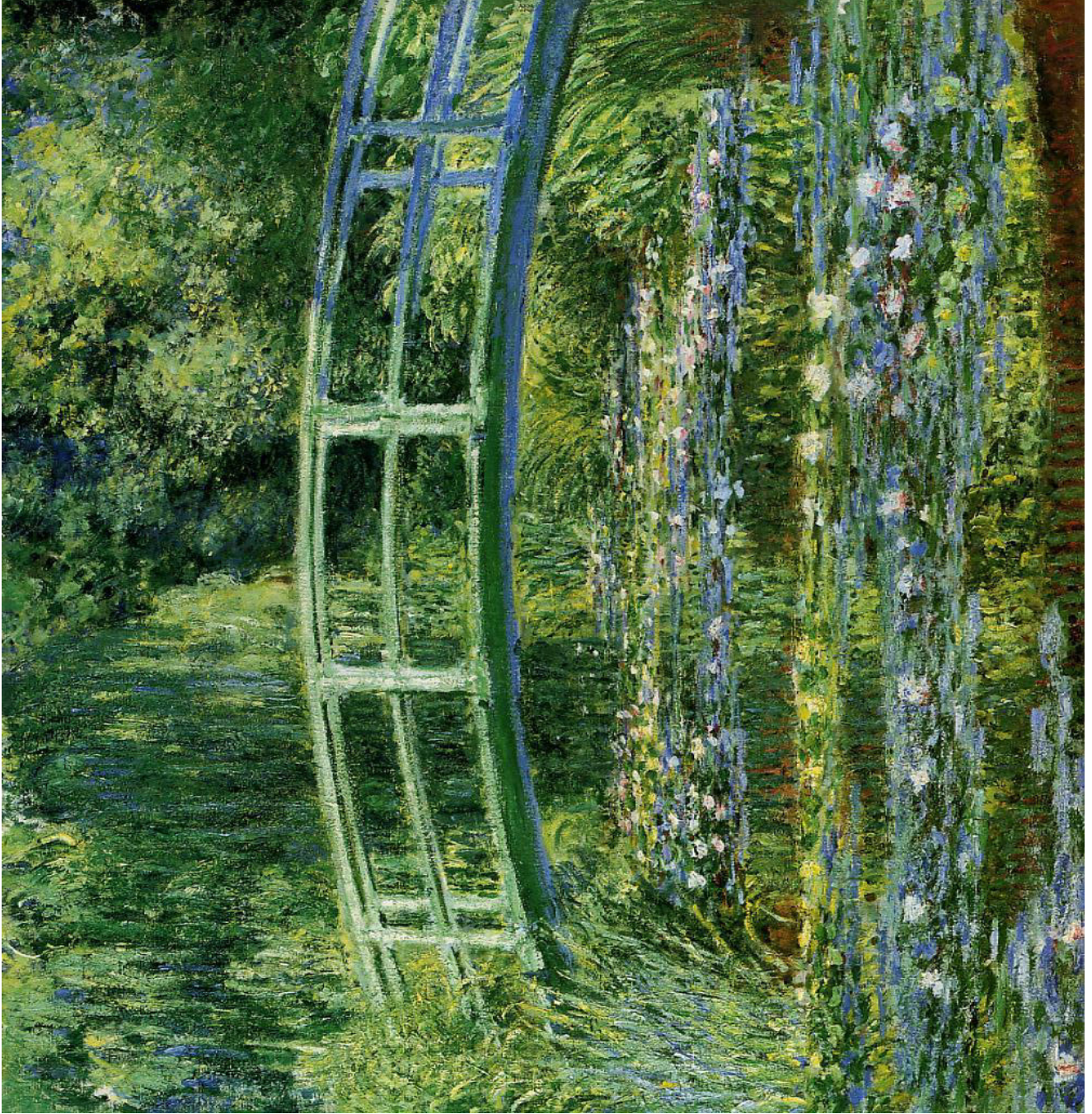
Woman with a Parasol - Madame Monet and Her Son

Claude Monet, 1875



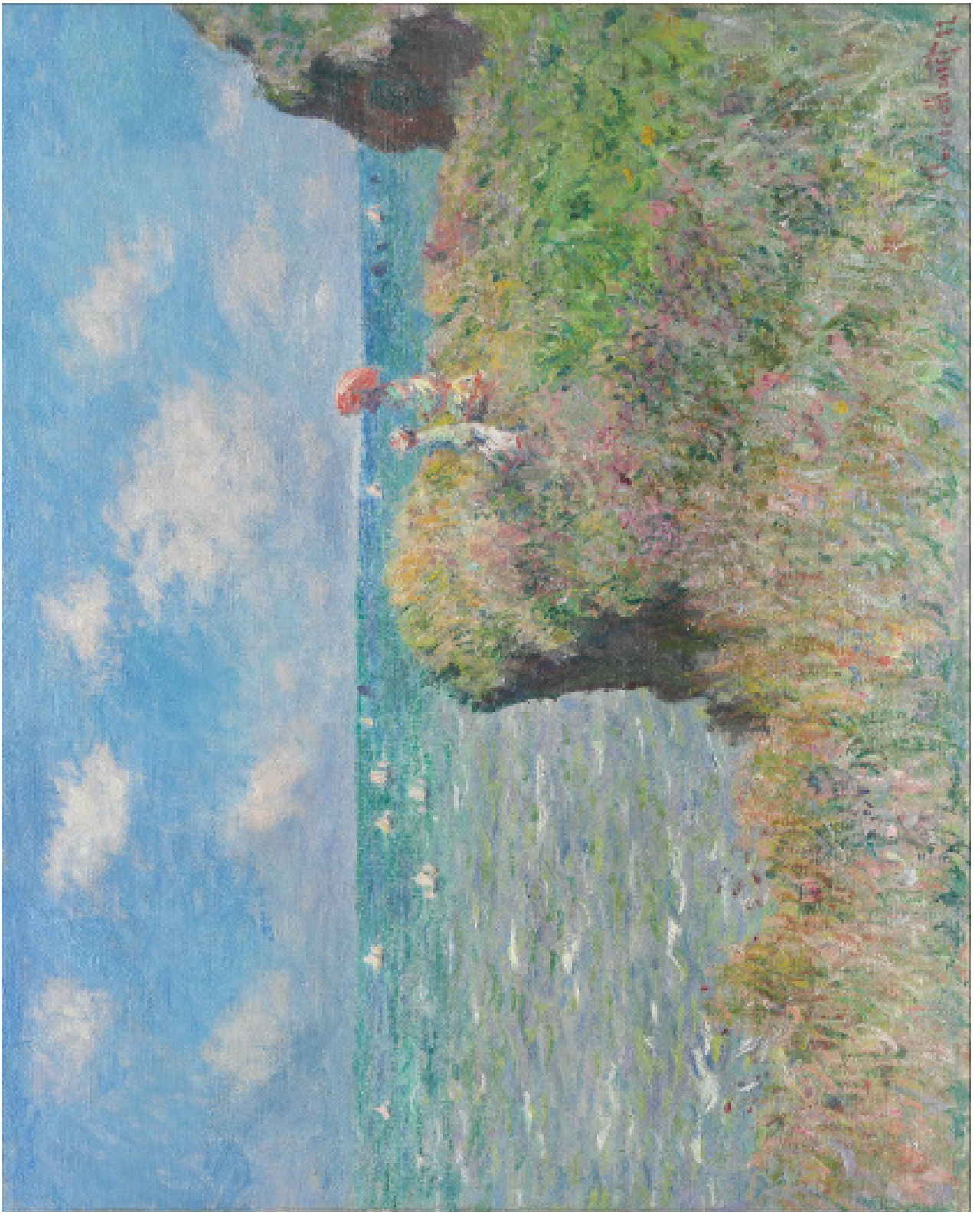
# Water Lilies and Japanese Bridge

Claude Monet, 1897-1899



Cliff Walk at Pourville

Claude Monet, 1882



Poppy Field, Argenteuil  
Claude Monet, 1875





# Bouquet of Sunflowers

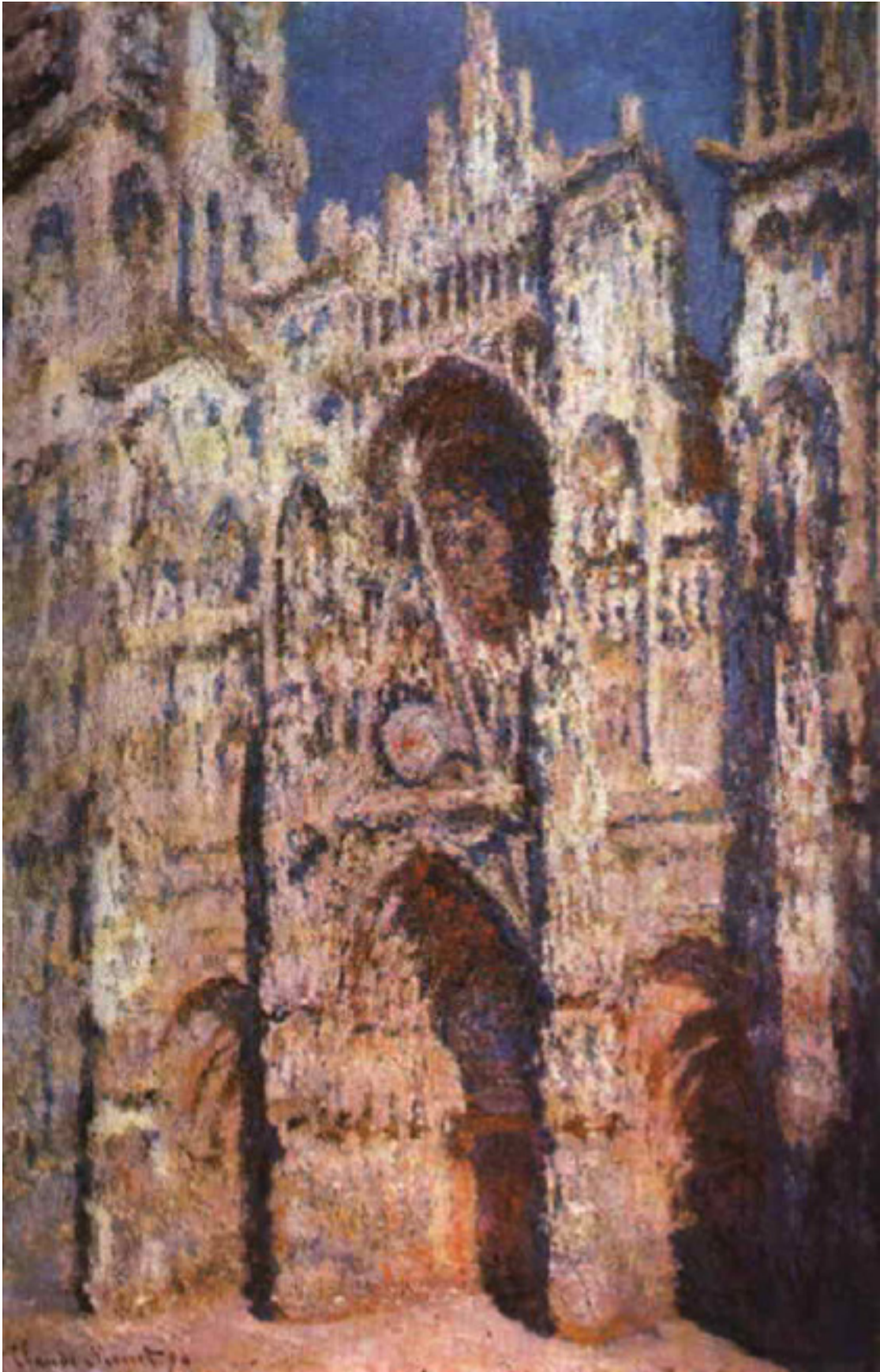
Claude Monet, 1880



Rouen Cathedral

Main Door and Saint Romain Tower, Full Sunlight

Claude Monet, 1893-1894



# Claude Monet

## ARTIST BIO NOTES

*These notes are provided to aid the teacher's own background research on the artist and his or her works. This is not meant to be presented to students as a list of facts and dates. When you first introduce the artist, tell students where the artist fits into the timeline of history, and where the artist lived and worked. Add a few more details with each new picture, but the information you share should be short and simple unless your students ask questions or wish to know more. Keep the main focus of your Picture Study time on observation and narration of the details of the picture.*

*Note: if a footnote appears with a fact that is not a direct quote, the fact comes from ONE source only.*

## LIFE AND CHARACTER

- ◆ 1840-1926
- ◆ Born in Paris
- ◆ 1857, mother died. Lived with aunt.
- ◆ 1861, joined the army. Served in Algeria two years, but came back to his aunt after contracting typhoid.
- ◆ 1870, married Camille Doncieux, moved to England soon after because of Franco-Prussian War.
- ◆ Two sons with Camille
- ◆ The following year went to Holland, then back to France, living in a village on the Seine.
- ◆ Wife became ill, was weakened then by birthing her second son in,. She died in 1879 at the age of thirty.
- ◆ Moved eventually to Giverny in Normandy in 1883. Planted a garden with a water lily pond where he painted for most of the rest of his life.

- ◆ Married a woman with six kids in 1892.
- ◆ Second wife died 1911. Monet's first son died 1914.
- ◆ Began developing cataracts soon after son's death. Surgery in 1923.
- ◆ 1926, died of lung cancer. Buried in Giverny.
- ◆ Struggled financially until around 1890 when his paintings began selling with growing success. Prior, received much criticism for his Impressionism.

### TRAINING AND CAREER

- ◆ Age 11, entered a secondary school for arts. Also took drawing lessons.
- ◆ Eugene Boudin, a marine artist, instructed Monet in techniques for painting outside.
- ◆ Attended art school after returning from the army, but left with fellow artists who wanted to break out of conventions and attempt something new.
- ◆ Met several artists with whom he experimented in new styles and techniques.

### ART STYLE AND ACHIEVEMENTS

- ◆ Monet is considered the founder of French Impressionism. Impressionism gained its name from his work *Impression, Sunrise*.
- ◆ Received much criticism early on for works along with other Impressionists. Pressed on in their new style despite rough reception, even opening their own exhibit when rejected by other exhibits. Monet began in rejection and financial struggle; died well-known, respected, and wealthy.
- ◆ Painted mainly outside.
- ◆ Began series painting around 1880s and continued to death. Most famous for his series paintings.
- ◆ Paintings exhibit blurry quality and different hues of color during his cataract trouble (his paintings had red hues before surgery and blue hues after surgery).

- ◆ Body of work: landscapes, seascapes, portraits
- ◆ Used his two wives as models for many of his paintings.
- ◆ Used his constructed lily pond in his final paintings.
- ◆ Rouen Series: “Monet reports that he rented a room across from the cathedral’s western facade in 1892 and 1893, where he kept multiple canvases in process and moved from one to the next as the light shifted. In 1894, he reworked the canvases to their finished states.”<sup>1</sup>
- ◆ Woman with a Parasol – Madame Monet and Her Son: of Monet’s first wife and their first son.

### IMPRESSIONISM AND SERIES PAINTING

- ◆ The artist focuses most on his “impression” or perspective rather than focusing on accurately depicting nature, as was conventionally done.
- ◆ Brushstrokes characterized by a rhythmic brokenness; colors fragmented as well; plays with lighting
- ◆ Series: same thing captured in different lights, weather, and times of day.
- ◆ His creativity in perception reached its zenith with his series paintings

### ARTIST BIO LINKS

<http://www.claudemonetgallery.org/biography.html> (detailed mainly on life, long)

<http://www.getty.edu/art/gettyguide/artMakerDetails?maker=260> (no life details, just art; very brief)

[http://www.metmuseum.org/toah/hd/cmon/hd\\_cmon.htm](http://www.metmuseum.org/toah/hd/cmon/hd_cmon.htm) (good detail, medium length)

<http://entertainment.howstuffworks.com/arts/artwork/claude-monet-biography.htm> (good detail)

<http://entertainment.howstuffworks.com/arts/artwork/claude-monet-paintings-1873-18788.htm> (Woman with a Parasol)

---

<sup>1</sup> [http://www.metmuseum.org/toah/hd/cmon/hd\\_cmon.htm](http://www.metmuseum.org/toah/hd/cmon/hd_cmon.htm)



## PICTURE SOURCES

[http://upload.wikimedia.org/wikipedia/commons/9/9a/Claude\\_Monet\\_011.jpg](http://upload.wikimedia.org/wikipedia/commons/9/9a/Claude_Monet_011.jpg)

[http://upload.wikimedia.org/wikipedia/commons/a/a4/Claude\\_Monet\\_-\\_Cliff\\_Walk\\_at\\_Pourville\\_-\\_Google\\_Art\\_Project.jpg](http://upload.wikimedia.org/wikipedia/commons/a/a4/Claude_Monet_-_Cliff_Walk_at_Pourville_-_Google_Art_Project.jpg)

<http://upload.wikimedia.org/wikipedia/commons/9/99/Water-Lilies-and-Japanese-Bridge-%281897-1899%29-Monet.jpg>

<http://www.metmuseum.org/toah/works-of-art/2001.202.5>

[http://www.artinthepicture.com/artists/Claude\\_Monet/sunflowers.jpeg](http://www.artinthepicture.com/artists/Claude_Monet/sunflowers.jpeg)

[http://en.wikipedia.org/wiki/File:RouenCathedral\\_Monet\\_1894.jpg](http://en.wikipedia.org/wiki/File:RouenCathedral_Monet_1894.jpg)

[http://en.wikipedia.org/wiki/File:Claude\\_Monet\\_-\\_La\\_Cath%C3%A9drale\\_de\\_Rouen,\\_Le\\_Portail\\_au\\_Soleil.jpg](http://en.wikipedia.org/wiki/File:Claude_Monet_-_La_Cath%C3%A9drale_de_Rouen,_Le_Portail_au_Soleil.jpg)

**Additional Images for Rouen Cathedral, painted at different times with different lighting and perspectives (great for comparison!)**

<http://en.wikipedia.org/wiki/File:RouenCathedralSerbia05.jpg>

[http://en.wikipedia.org/wiki/File:Claude\\_Monet\\_-\\_Cath%C3%A9drale\\_de\\_Rouen.\\_Harmonie\\_bleue\\_et\\_or.jpg](http://en.wikipedia.org/wiki/File:Claude_Monet_-_Cath%C3%A9drale_de_Rouen._Harmonie_bleue_et_or.jpg)

[http://en.wikipedia.org/wiki/File:Claude\\_Monet\\_-\\_Cath%C3%A9drale\\_de\\_Rouen.\\_Harmonie\\_bleue.jpg](http://en.wikipedia.org/wiki/File:Claude_Monet_-_Cath%C3%A9drale_de_Rouen._Harmonie_bleue.jpg)

